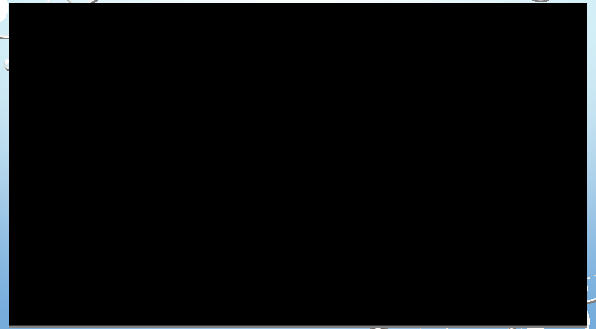


IN THE ROUND DEWATERING CLAYTON, INDIANA JAMES PENNER

HOW I STARTED...

- LAND APPLIED UNTIL REGULATIONS CHANGED YEARS AGO
- ALAR MACHINE
- BELT PRESS- OR-TEC
- DEWATERING BOX
- NOTHING WAS WORKING AND OUT OF FRUSTRATION CAME UP WITH DEWATERING DEVICE THAT WORKS!

IN THE ROUND DEWATERING
WWW.ITRDEWATERING.COM



DO I NEED TO SCREEN MATERIAL?



THE PROCESS

- The trucks are unloaded and stored in holding pit once ready a trash pump is used to pump up to dewatering device.



DOES THE KIND OF PUMP MATTER?



WHY POLYMER?

- * If it will Flocc it will dewater.
- * Mix with polymer just before going into dewatering drum



HOW DO YOU MIX THE POLYMER?



POLYMER

- * Polymer will freeze and needs to be protected from environment
- * It does not hurt the WWTP



FILLING THE DRUM...

- ALREADY MIXED POLYMER



WHAT DO YOU DO WITH CLEAR WATER?

- RUN IT BACK THROUGH THE WASTEWATER TREATMENT PLANT THEN IT EVENTUALLY WILL BE OUT TO THE CREEK .

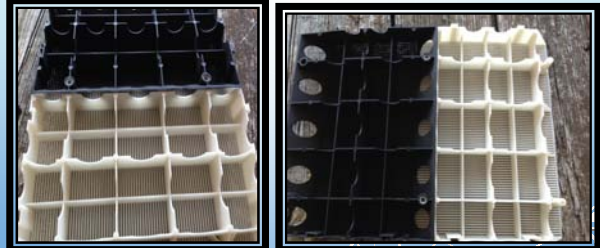


WHAT ABOUT THE TILES?

- MADE OF INTERLOCKING PLASTIC MATERIAL
- EASY TO RINSE
- EASY TO CHANGE IF BREAKS
- DURABLE
- CURVED TO GO AROUND THE DRUM
- DO THEY WEAR OUT?



MORE TILES



BEGINNING ROTATION PROCESS

- THIS IS HOW IT WORKS



FINISHING ROTATION

- WRAPPING IT UP



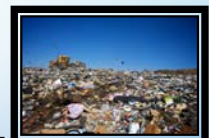
WHAT DOES IT LOOK LIKE WHEN IT IS DONE?

- IT IS DRIED MATERIAL NO WATER RUNNING OUT OF IT AND NOT UNLOADED ON MULCH TO ABSORB MOISTURE.



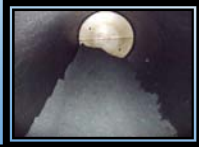
WHAT DO YOU DO WITH THE SOLID MATERIAL?

- SEVERAL POSSIBILITIES
- LANDFILL
- COMPOST AND THEN SELL IT
- LAND APPLY IF OBTAIN PERMITS IN CERTAIN PARTS OF WORLD



GETTING SPECIFIC...

- HOW MANY GALLONS GO INTO THE UNIT?
- CAN I ADD MORE TO IT ONCE IT HAS STARTED ROTATING?
- HOW MANY TONS OF DRIED "STUFF" WILL I END UP IN ONE LOAD?



HOW LONG DOES IT TAKE TO PROCESS?

- I TURN IT ON AT NIGHT BEFORE I LEAVE THE SHOP AND IT IS DONE IN THE MORNING READY TO BE DUMPED AND RELOADED



HOW IS IT POWERED?

- IT IS POWERED BY A 1/2 HORSE ELECTRIC MOTOR
- 110 VOLTS
- VARIABLE SPEED FORWARD AND REVERSE



HEAVY DUTY GEAR BOX

- ONE REVOLUTION EVERY 2 1/2 HOURS
- ROTATES THE SAME DIRECTION



HOW DO I GET IT READY TO RUN AGAIN?

- OCCASIONALLY RINSE WITH GARDEN HOSE
- NO SHOVEL
- NO SCRAPER
- NO PRESSURE WASHER



WHAT ARE THE DIMENSIONS?

- 90 INCHES IN DIAMETER (STANDARD CAN NOT CHANGE)
- ROLL OFF TRUCK 20 FOOT LONG
- SEMI ROLL OFF UP TO 30 FOOT LONG

30 FOOT DRUM ON TRAILER ROLL OFF



WHAT DOES IT COST TO RUN?

- Landfill cost?
- Polymer cost?
- Electric cost?
- Clearwater cost?



HOW MANY GALLONS CAN BE PROCESSED IN A DAY?

- HOW LONG DOES IT TAKE TO DO THAT?
- DO I NEED TO PHYSICALLY BE THERE WHILE IT IS FILLING AND ROTATING?
- HOW LONG SHOULD IT ROTATE?
- HOW DRY WILL THE SOLIDS BE?
- HOW QUICK CAN I FILL IT?

WHAT ARE MY OPTIONS?

- SIZE OF UNIT
- PORTABLE UNIT
- PERMITS NEEDED?
- WHAT IS IT MOUNTED ON?
- WHAT EQUIPMENT DO I NEED SO I CAN RUN THE MACHINE?

WILL IT WORK WITH GREASE?

- AS LONG AS YOU HAVE THE PROPER POLYMER IT WILL WORK WITH GREASE
- I HAVE DONE LOADS OF JUST GREASE AND HAVE HAD GOOD RESULTS
- PH WILL NEED TO BE ADJUSTED FOR STRAIGHT GREASE



WHAT ABOUT THE WEATHER?

Does freezing weather matter?
Can the unit be outside?



THANK YOU

- CONTACT : JAMES PENNER
IN THE ROUND DEWATERING
CLAYTON, INDIANA



ANY QUESTIONS?



THANK YOU!